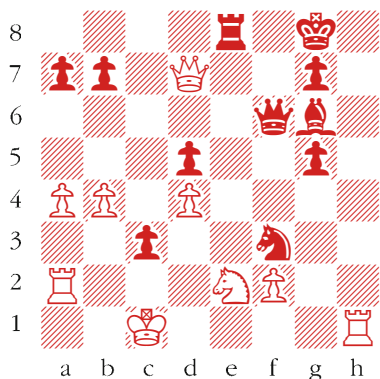


# Chess

## Wijk aan Zee Raymond Keene

The tournament at Wijk aan Zee has ended in victory for Lev Aronian from Armenia, ahead of Carlsen, Radjabov and Ivanchuk. The official challenger for the world title later this year, Gelfand, made little impact on events, while Anish Giri, the victor of Reggio Emilia, suffered a catastrophe. This week some key positions from this important competition. Aronian's win against Giri was particularly original and spectacular.

### Giri-Aronian; Wijk aan Zee 2012

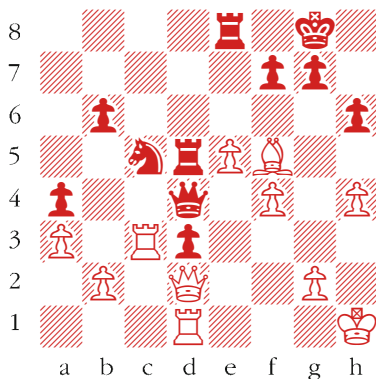


In this position Aronian concluded with a remarkable and original combination. **41 ... Ne1!! 42 Rxe1 Qf4+ 43 Kd1** 43 Nxf4 Rxe1 is mate. **43 ... Qe4 White resigns**

### Carlsen-Karjakin; Wijk aan Zee 2012 (see diagram 2)

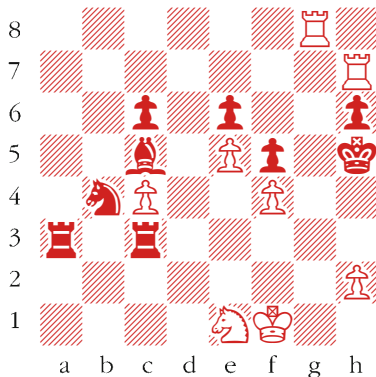
White is attempting to round up Black's powerful passed d-pawn. Karjakin allows him to do this because the resultant pin on the d-file proves overwhelming for Black. **27 ... g6 28 Bxd3 Red8 29 Qe1** White is hamstrung as 29 Qc1 is met powerfully by 29 ... Qf2. **29 ... Qxf4 30 e6 Nxe6 31 Bc2 b5 32 Rxd5 Rxd5 33 Re3 Nd4 34 Bd3 Kg7** Black is now a pawn ahead for nothing and Karjakin wraps the game up efficiently. **35 Kg1 Qf6 36 Kh2 Rh5 37 Rh3 Ne6 38 Rf3 Rxf4+ 39 Kg1 Qd4+ 40 Qf2 Qxf2+ 41 Kxf2 b4 42 Re3 Rd4 43 Bb5 Kf6 44 Rf3+ Ke7 45 Rd3 bxa3 46 bxa3 Rf4+ 47**

Diagram 2



**Ke3 f5 48 Rd7+ Kf6 49 Rd6 Re4+ 50 Kf2 Kg5 51 Be8 Nf4 52 Bb5 Re5 53 Bc4 Nh5 54 Ra6 Nf6 55 Rxa4 Ng4+ 56 Kf1 Kh4 57 Be2 Kg3 58 Bxg4 fxg4 59 Rb4 h5 60 a4 Kh2 White resigns**

### Gashimov-Radjabov; Wijk aan Zee 2012



Although Black is a piece ahead in this endgame, White threatens mate starting with Rg5+. Radjabov returns some material to counteract this threat. **45 ... Rf3+ 46 Nxf3 Rxf3+ 47 Kg2 Rxf4 48 Rgh8 Rg4+ 49 Kh3 Nd3** Black now plans ... Nf2 mate. **50 Rxh6+ Kg5 51 Rg8+ Kxh6 52 Rh8+ Kg5 53 Rh5+ Kf4 White resigns** Black avoids the trap of 53 ... Kxh5 which is a draw by stalemate. Now 54 Rxf5+ will be met by 54 ... exf5 55 e6 Nf2 mate.

## PUZZLE NO. 204

White to play. This position is from Harikrishna-Vocaturu, Wijk aan Zee 'B' Group. How did White exploit a classic weakness in the black position? Answers to me at The Spectator by Tuesday 7 February or via email to victoria@spectator.co.uk or by fax on 020 7961 0058. The winner will be the first correct answer out of a hat, and each week I shall be offering a prize of £20. Please include a postal address and allow six weeks for prize delivery.

**Last week's solution** 1 a6  
**Last week's winner** Darvell School Chess Club, Robertsbridge, East Sussex

